

CHEMICAL PROCESSING

LEADERSHIP | EXPERTISE | INNOVATION



**STRATEGIZE YOUR
STEAM SYSTEMS**

TABLE OF CONTENTS

Make the Most of Blowdown	5
Recovering thermal energy from flash steam offers energy-saving opportunities	
Plant Combats Corrosion in Idled Boilers	8
Several measures provide proper protection of off-line steam generators	
Get a Hold of Steam System Management	15
Software helps to maximize equipment reliability, efficiency and safety	
Resources	18

PRODUCT FOCUS

PRE-PACKAGED HOT WATER SET FOR JACKET HEATING

Pick Heaters help circulate hot water through jacketed reactors, rotary vacuum dryers, tanks and similar jacketed vessels. These custom-engineered systems provide extremely accurate temperature control up to 176°C within a fraction of a degree. They also provide even heat distribution throughout the jacket and smooth transitions from heating to cooling with no thermal shock. Pick takes complete system responsibility for all components — just pipe it up and turn it on.

Pick Heaters manufactures direct steam injection liquid heating systems for process industry applications. The chemical industry has been using Pick Heaters for more than 70 years, says the company. Precise temperature control and even heat distribution ensure consistently high product quality with no burn-on. Quiet and compact, Pick Heaters provide 100% heat transfer energy efficiency and operational cost savings.

Pick Heaters makes several complete systems: the Pick constant flow heater, which is used where a continuous flow of hot water is needed like jacketed heating, and a variable flow heater, which is reportedly ideal for frequent start/stop applications such as hose stations.

Pick systems are available in 10 standard sizes for liquid flow rates up to 5,000 gpm and steam flow rates up to 50,000 lbs./hr. Standard materials of construction include cast iron, carbon steel and stainless steel. Specialty alloys are available on request.



AD INDEX

Armstrong International • www.armstronginternational.com	4
Check-All Valve Mfg. Co. • www.epiccheckvalves.com	7
Pick Heaters Inc. • www.pickheaters.com	14

PRODUCT FOCUS

VALVES OPERATE IN ANY FLOW ORIENTATION

Features ease installation and minimize pressure drop

The Epic series check valve product offering consists of in-line spring-loaded poppet-type check valves designed to be cost effective, simple, rugged and efficient while operating in any flow orientation. The valves are machined from 300 series stainless steel bar stock with Aflas seat/seals and a 1/2-psi stainless steel spring (cracking pressure). It is streamlined so that media flows through the valve over smooth, contoured surfaces with a minimum change in direction. The check valve also achieves a high flow capacity and reduced pressure loss compared to other poppet style check valves of similar sized connections. These features minimize the pressure drop across the valve. The valve closes quickly and smoothly for silent operation and eliminates water hammer.



The series incorporates a replaceable drop-in check mechanism (Replaceable Insert Kit sold separately) that installs into the existing body without requiring additional assembly of separate checking components. This pre-assembled complete check mechanism eliminates the need to assemble individual checking components, creating an efficient and economical method of effectively rebuilding the entire check mechanism, if an application requires, the company says. The check valves are suited for a range of applications in liquids, gases and steam.

Check-All Valve Mfg. Co. | 515-224-2301 | www.checkall.com/express_line.html



The Future of Steam Trap Management is Here



Steam Trap Management in the Palm of Your Hand



SAGE[®] raises utility system management to a groundbreaking new level by enabling you to maximize equipment reliability, efficiency and safety.

SAGE[®] by Armstrong is a steam dashboard and database management software that allows you to quickly survey your steam traps quickly and accurately.

The most advanced tool for smart thermal utility monitoring, measuring and reporting available today.



Armstrong International

INTELLIGENT SOLUTIONS IN STEAM, AIR AND HOT WATER

North America • Latin America • India • Europe / Middle East / Africa • China • Pacific Rim

armstronginternational.com

© 2017 Armstrong International, Inc.

Make the Most of Blowdown

Recovering thermal energy from flash steam offers energy-saving opportunities

By Riyaz Pappar

Respective of how steam is produced in our process plants, several aspects of steam generation are common; we should apply standard best practices to them. This column specifically addresses the blowdown stream as well as both the flash steam recovery and heat recovery that we should implement in our steam systems.

Every steam system has a water treatment plant; feedwater is made up of treated makeup water, returned condensate and directly injected steam (in the deaerator). Although the condensate and steam are clean, the treated makeup water still brings in dissolved impurities. Because these impurities are not soluble in steam, they remain in the boiler. As a result, their concentration builds and can lead to serious operational problems such as scaling on the water-side of the tubes resulting

in tube leaks and failures, foaming resulting in liquid carryover, loose sludge in the boiler water, etc. All of these problems could damage boiler integrity. Blowdown is the primary mechanism that controls the water chemistry of the boiler water. It regulates the concentration of dissolved and precipitated chemicals in the boiler and, thus, ensures steam generation equipment functions reliably.

Generally, boiler water conductivity or total dissolved solids is used to control blowdown, but as our steam systems get more complex, other parameters — pH, silica, iron, etc. — also are used as secondary control points. In the past 25 years, I have seen blowdown rates as low as 1% and in some instances as high as 15%. Blowdown rate depends on several factors; however, I will not be covering blowdown rate in this column. Please work

with your water chemist to ensure you have everything in place to minimize blowdown.

CAPTURE THERMAL ENERGY

Blowdown, because it is saturated liquid water at steam generation pressure, contains a significant amount of thermal energy. The higher the steam generation pressure, the higher the saturation (blowdown) temperature and the higher the thermal energy (Btu/lb) associated with the blowdown. As blowdown is discharged from the boiler, this thermal energy (provided by the fuel or from another source) is lost. Therefore, reducing the amount of blowdown to the bare minimum is an excellent best practice; beyond that we need to look at other mechanisms to capture lost energy.

So, that brings us to creating and recovering flash steam from blowdown and then, if economically justifiable, recovering heat from the liquid water before discharge. The simplest configuration is to first take the blowdown stream into a flash tank whose pressure is slightly higher than either the deaerator pressure or the lowest-pressure steam header in the steam generation area. The blowdown flashes and produces low-pressure steam that can be recovered and used within the steam system to offset deaerator steam demand. Recovering flash steam accounts for 65–70% of the total blowdown stream energy that would otherwise have been lost. Interestingly, the flash tank is a simple piece of equipment with no moving parts. On several

occasions, I have been able to source it from within a plant's operations that are no longer in service. The remainder of the liquid water from the flash tank is still hot (>225°F) and can be used to exchange heat in a simple one-pass shell-and-tube heat exchanger or a plate-and-frame unit, etc. This can be used to heat the makeup water going to the deaerator, thereby saving on overall steam demand from utilities.

Also, I have faced some challenges in plants when I tried implementing blowdown thermal energy recovery. Most relate to past incorrect applications, such as a large U-tube heat exchanger used to recover heat from blowdown that fouled and eventually was taken out of service because it became a maintenance headache. In other plants, because there is so much excess low-pressure steam, managers claim there's no benefit of low-pressure, low-temperature heat recovery. This is not necessarily true; technologies exist to upgrade low-pressure steam and make use of every Btu that would otherwise be lost. I realize the overall blowdown energy recovery and cost savings may not be huge (<2%) but, as one of the simplest and most cost-effective best practices, it should never be ignored! (For more on improving boiler management to help save energy, see "Optimize Boiler Loads," <http://goo.gl/z9c1M1> and "Don't Get Steamed," <http://goo.gl/xoUQSM>.) ■

RIYAZ PAPAR is a former *CP* energy columnist. He can be reached at rpapar@hudsontech.com.

The EPIC® Check Valves Get Up To Steam

Check Valves With a World of Possibilities!



**Pre-assembled
Drop-in Replaceable
Check Mechanism**

**PATENT
PENDING**



Manufactured in West Des Moines, Iowa, USA
by Check-All Valve Mfg., Co.®

www.epiccheckvalves.com ♦ sales@epiccheckvalves.com



Check-All Valve Mfg. Co. is proud to introduce a new check valve product offering with a world of possibilities. The **EPIC®** series consists of in-line spring-loaded poppet-type check valves that are designed to be cost effective, simple, rugged and efficient while operating in any flow orientation.

The **EPIC®** is machined from 300 series stainless steel bar stock with Aflas® seat/seals and a 1/2-PSI stainless steel spring (cracking pressure). **These materials of construction are excellent for steam applications.** The check valve also achieves a high flow capacity and reduced pressure loss compared to other poppet style check valves of similar sized connections. These features minimize the pressure drop across the valve. Available connection options are FNPT, MNPT, flared tube, and double ferule compression tube.

Additionally, the **EPIC®** series incorporates a replaceable drop-in check mechanism (**Replaceable Insert Kit sold separately**) that is easily installed into the existing body without requiring additional assembly of separate checking components.

This pre-assembled complete check mechanism eliminates the need to assemble individual checking components, creating an efficient and economical method of effectively rebuilding the **entire** check mechanism, if an application requires.

Due to the materials of construction, high flow capacity, complete reparability and the quality customers have come to expect from Check-All, the **EPIC®** check valves are uniquely suited for a very wide range of applications in **liquids, gases and steam.**

See us on the web at:
<http://www.epiccheckvalves.com>

For additional information and a free brochure contact:

Phone: 515-224-2301
Fax: 515-224-2326
Email: sales@epiccheckvalves.com

Plant Combats Corrosion in Idled Boilers

Several measures provide proper protection of off-line steam generators

By Brad Buecker, Kiewit Engineering and Design Co., and Dan Dixon, Lincoln Electric System

Steam generation plays a critical role at many industrial facilities. Unfortunately, the high-temperature and high-pressure environment of large steam generators makes them susceptible to corrosion. Even seemingly minor impurity ingress can cause problems [1]. Fortunately, plants can take advantage of a lot of lessons learned about preventing corrosion in boilers. However, an often overlooked issue is the risk of severe corrosion occurring during those times when a steam generator is down due to lack of steam demand or for maintenance. This article outlines several techniques for protecting steam generators at these times. Our examples come from a power plant, Lincoln Electric System's Terry Bundy Generating Station in Lincoln, Nebraska, but the technologies suit process plants as well.

BACKGROUND

The Terry Bundy plant has three GE LM6000 combustion turbines, two of which are equipped with heat recovery steam generators (HRSGs) that drive a supplemental steam turbine. Total plant capacity is 170 MW. The units cycle on and off, often on a daily basis during the summer, according to the requirements of the South West Power Pool. At other times, a unit may be down for several days or perhaps even weeks during periods of mild weather or for maintenance outages.

For normal operating chemistry, the HRSG feedwater is on an all-volatile treatment oxidizing [AVT(O)] program, with ammonium hydroxide injection to maintain feedwater pH within a 9.6-10 range. High-pressure evaporator chemistry complies with the

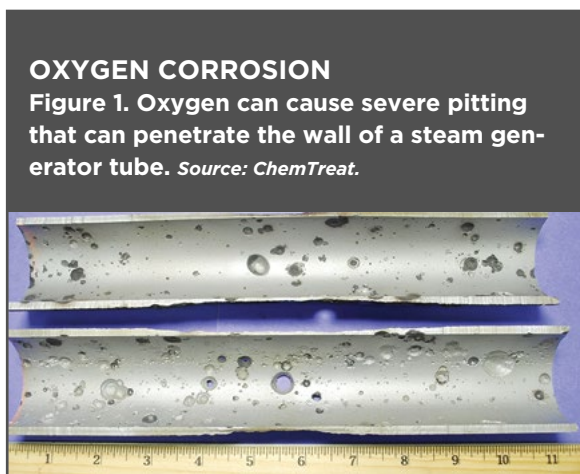
Electric Power Research Institute's phosphate guidelines, with trisodium phosphate as the only phosphate species and control within a 1–3 ppm range. The high-pressure evaporator pH control range is 9.5–10. Free caustic concentrations are maintained at or below 1 ppm to minimize the risk of caustic gouging.

For short-term outages, the HRSGs must remain full of condensate to enable quick startup. On the other hand, a maintenance outage requires draining of the unit, preferably while it is hot so it flash-dries. However, even such drying still leaves some areas exposed to moist conditions and, thus, vulnerable unless additional protective methods are used.

The equipment and processes outlined below all are designed to protect the unit from oxygen corrosion during any outage. Oxygen attack is extremely serious.

The corrosion mechanism can induce severe metal loss in those areas of high oxygen concentration. The attack often takes the form of pitting (Figure 1), where the concentrated corrosion can cause through-wall penetration and equipment failure in a short period of time.

In addition, oxygen attack will generate corrosion products that then carry over to the steam generator during startups. Deposition of iron oxides in the waterwall



tubes leads to loss of thermal efficiency and, most importantly, establishes sites for under-deposit corrosion, such as very insidious hydrogen damage, acid phosphate corrosion (in units with poorly maintained or monitored chemistry — see: “Don’t Get Steamed,” <http://goo.gl/XPhI7s>), and caustic gouging [2].

Oxygen also can infiltrate steam generators at startup when collected condensate or fresh demineralized water is needed for filling or boiler top-off. These high-purity waters typically are stored in atmospherically vented tanks. The water absorbs oxygen and carbon dioxide, often to the saturation point, which may be up to 8 ppm in the case of oxygen. When the makeup is injected into a cold steam generator, significant oxygen attack is possible.

KEY MEASURES

To prevent oxygen ingress and corrosion, the Terry Bundy combined-cycle plant relies on four of the best techniques: nitro-

gen blanketing; periodic water circulation; dissolved oxygen removal from makeup condensate and demineralized water; and warm air recirculation to protect the low-pressure turbine.

Nitrogen blanketing. The first and foremost measure is nitrogen blanketing during shutdown and subsequent short-term layups. Experience has shown that introducing nitrogen to key points in the system before the pressure has totally decayed will minimize ingress of air. Then, as the system continues to cool, only nitrogen enters, not oxygen-laden air. Key points for nitrogen protection in HRSGs include the evaporator, economizer and feedwater circuits.

The nitrogen blanketing system was installed in 2005, just a few years after the steam generators' startup, when plant personnel discovered oxygen pitting in one of the high-pressure evaporators as well as other corrosion.

One question that often arises is how best to supply nitrogen. Certainly local gas-supply or welding firms can provide bottles of compressed nitrogen. Liquid nitrogen is another possibility. Terry Bundy personnel selected a different method, nitrogen generation via a pressure-swing adsorption (PSA) system. (For more on such units for nitrogen generation, see: "Rethink Nitrogen Supply for Chemical Blanketing," <http://goo.gl/btiSw3>.)

NITROGEN GENERATOR

Figure 2. Unit uses a carbon molecule sieve to separate nitrogen from air. Source: Lincoln Electric System.



The process relies on a carbon molecular sieve that, when compressed air is introduced at high pressure, adsorbs oxygen, carbon dioxide and water vapor but allows nitrogen to pass through (Figure 2). The nitrogen then can be collected in a receiver for use as needed. At a preselected interval, pressure is released from the unit; O₂, CO₂, and H₂O desorb from the material and are vented to atmosphere. The nitrogen purity from this system depends upon production rate, and ranges from 1,000 scfh at 99.5% purity to 248 scfh at 99.99% purity.

The Terry Bundy N₂ generator supplies 5-psig nitrogen to the low-pressure and high-pressure drums during wet layups; the nitrogen also serves to "push" water from an HRSG during dry layup draining. A nitrogen pressure of 5 psig is maintained during the dry layup, provided no major tube work is required.

An obvious major concern with nitrogen blanketing — and why some plants don't use it — is safety. Nitrogen is an asphyxiating agent and requires strict adherence to confined-space entry procedures and proper ventilation of the space.

Periodic water circulation. This is another important point with regard to wet layup chemistry. Regular water movement minimizes stagnant conditions that can concentrate oxygen in localized areas to cause pitting. Both Terry Bundy HRSGs have circulating systems installed on the high- and low-pressure circuits for use during wet layups. Each circuit uses one of two redundant preheater recirculation pumps, which normally are in service during HRSG operation to mitigate acid dew point corrosion of external circuits. Each pump provides approximately 100 gpm per circuit. Valves and piping have been added to enable seamless transition from layup circulation to normal operation. Sample/injection systems allow operators to test the layup chemistry for pH and dissolved oxygen (using colorimetric ampules), and to inject ammonium hydroxide if the pH must be raised. In addition, modifications made in each boiler drum permit the layup water to bypass the drum baffle, promoting circulation and minimizing short-circuiting via the downcomers. The pumps typically are started once drum pressure drops below 50 psig, and remain in service for the duration of the layup.

DISSOLVED OXYGEN REMOVAL

Figure 3. Hollow-fiber membranes eliminate oxygen in condensate return and makeup water. Source: Lincoln Electric System.



Dissolved oxygen removal from condensate and makeup water. Because demineralized water commonly is stored in atmospherically vented tanks, oxygen-laden water enters the steam generator during normal operation and, even more critically, during boiler filling. In the latter case, the influx of cold oxygen-saturated water can cause severe difficulties. One possible method to minimize this problem is to limit oxygen ingress to storage tanks — but this typically is a difficult proposition. So, instead, Terry Bundy personnel selected a gas-transfer membrane technology to treat condensate return and makeup water (Figure 3).

The oxygen-laden water flows along hollow-fiber membranes that let dissolved gases pass through but not the water. A sweep gas, often nitrogen, flows along the opposite surface of the membranes and carries away the gases. The technology can reduce the

DEHUMIDIFIER

Figure 4. Desiccant wheel unit provides air with only 10% humidity to condenser and low-pressure turbine.

Source: Lincoln Electric System.



dissolved oxygen concentration from saturated conditions to less than 10 ppb.

DON'T FORGET THE STEAM TURBINE

Far too often in the power industry, plants allow the condenser hotwell to remain moist or even contain standing water during outages in which the condenser vacuum was broken and air entered the condenser and low-pressure turbine. The low-pressure

blades in steam turbines typically collect salts that carry over with steam from boiler drums. The combination of a moisture-laden atmosphere and these salt deposits can foster pitting and stress corrosion cracking.

A very practical method to combat this corrosion, and the one adopted at Terry Bundy, is injection of desiccated air into the condenser during all but short-term, i.e., <72 h, layups. This system uses a desiccant wheel dehu-

RELATED CONTENT ON CHEMICALPROCESSING.COM

“Don’t Get Steamed,” <http://goo.gl/XPhI7s>

“Keep Out of Hot Water,” <http://goo.gl/LFIVig>

“Rethink Nitrogen Supply for Chemical Blanketing,” <http://goo.gl/btiSw3>

“Plants Pit New Tools Against Corrosion,” <http://goo.gl/T2Vqj3>

“Should You Revamp or Replace Your Boiler?,” <http://goo.gl/5aahSG>

REFERENCES

1. Buecker, B., "The Importance of Steam Generation Chemistry Control and Monitoring as Illustrated by Case Histories," IWC 15-10, Proceedings, 76th Ann. Intl. Water Conf., Orlando, Fla. (Nov. 15-19, 2015).
2. "Cycle Chemistry Guidelines for Shutdown, Layup and Startup of Combined Cycle Units with Heat Recovery Steam Generators," Electric Power Research Inst., Palo Alto, Calif. (2006), downloadable at <http://goo.gl/85TxVI>.

midifier (Figure 4) to provide 700 scfm of 100°F air at 10% humidity to the condenser and low-pressure turbine. This flow can lower the relative humidity from nearly 100% to less than 30% in just a few hours.

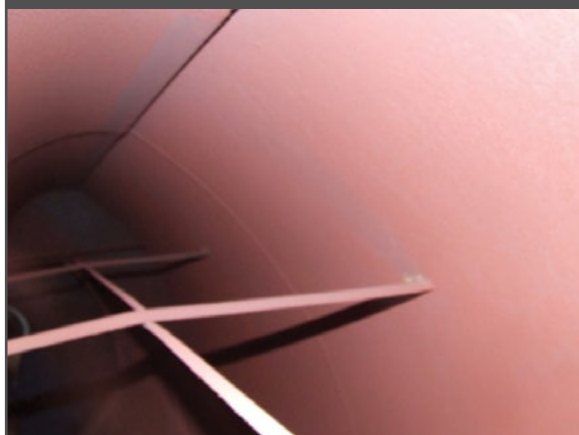
IMPRESSIVE RESULTS

In 2005, drum inspections showed significant pitting. This prompted implementing the changes we've outlined. A repeat inspection in 2008 showed no new pitting (Figure 5). Subsequent inspections continue to show little to no additional pitting.

Iron level monitoring, via particulate collection on 0.45-micron filters, showed a significant decrease in samples from the condensate pump discharge and both low-pressure and high-pressure drums. Quicker startups than in the past are now commonplace. In addition and of significant importance, the units can be left in wet layup for extended periods, which saves

FOLLOW-UP INSPECTION

Figure 5. Check conducted three years after measures were implemented showed no new pitting. *Source: Lincoln Electric System.*



the plant six hours (over dry layup) to reach full load when needed. ■

BRAD BUECKER is a process specialist for Kiewit Engineering and Design Co., Lenexa, Ks. **DAN DIXON** is supervisor, inter-local projects, for Lincoln Electric System, Lincoln, Neb. E-mail them at Brad.Buecker@kiewit.com and ddixon@les.com.



LARRY SCHUBERT FLAT LINED!

(and feels like a million bucks...)

Actually, the first thing he felt was relieved. Because Larry finally discovered absolute precision temperature control for all his chemical processing. Thanks to Pick Direct Steam Injection Heaters, now his process temperature graphs show one, long, beautiful, flat line. That's because Pick's exceptional temperature control automatically holds discharge temperatures to extremely close tolerances – within 1°C or less, while providing rapid response to changing process conditions.

Whether you require jacketed heating or other process liquid heating applications, Pick eliminates BTU losses for 100% energy efficiency. This alone could save Larry's company up to 20% in fuel costs. In addition, Pick's compact design along with its ease of maintenance, saves valuable space and invaluable down time. All this, combined with an unlimited supply of hot water, low water pressure drop, the lowest OSHA noise level, and the widest operating range of any direct steam injection heater is enough to make anyone's heart go pit-a-pat. Which is precisely what flat lining can do to a guy.



pick
heaters inc.

262.338.1191

E-mail: info1@pickheaters.com

www.pickheaters.com

Get a Hold of Steam System Management

Software helps to maximize equipment reliability, efficiency and safety

Refineries and other chemical plants frequently miss or have a delayed response to critical issues in daily operations due to failed steam traps. However, failed steam traps are often viewed as a routine part of running a plant or the cost of production. While steam traps play a crucial role in plantwide safety, equipment reliability and product quality, they also can cause production interruptions if not maintained properly.

STEAM SYSTEM CHALLENGES

Refineries often experience daily issues due to a lack of steam system and steam trap management. Some of the problems encountered include:

- Injuries and incidents related to steam tracing

- Escalating repair costs
- Increasing unit freeze-up issues
- The inability to distinguish easily between working and nonworking steam traps
- The inability to generate work lists for repairs resulting from an incomplete database
- Inappropriate or insufficient repair tracking

Steam trap management can be a cumbersome task for refineries that house 2,000 to 10,000 traps, so the ability to manage steam traps while generating data collection is advantageous. Without a steam system management tool, refineries are unable to generate reports for failed traps or seasonal shutoffs or provide reports by area or site. They also have no access to consistent information in real time.

Steam system monitoring software can help refineries keep a close eye on their steam traps. The software uses algorithms to analyze steam trap data to track behavior and performance for steam system management. It tests, records, tracks and reports on plant steam systems so that refineries and other chemical plants can manage multiple sites and various steam trap types while decreasing the overall time required for data collection, recording and reporting.

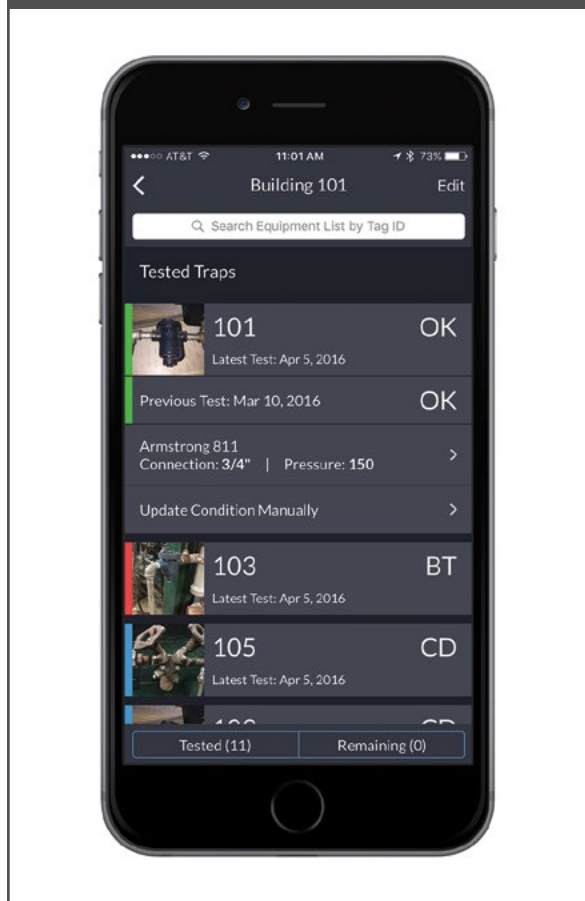
MONITORING STEAM TRAPS

To address such issues, a U.S. refinery with a capacity of 125,000 bbl/d of crude oil turned to Sage for help with managing 9,010 steam traps. Within the first six to eight months of starting the program, the refinery documented savings of more than \$5 million as well as reductions in energy and steam costs.

The software is designed to be intuitive to use and easily accessible by an exclusive mobile app (Figure 1). It offers tight security, instant notifications and precise documentation and can accommodate companies of any size. It allows refineries to increase equipment reliability, efficiency and safety, while enabling reductions in environmental emissions. Reports generated provide a totalized summary of selected data in any of the following categories: monetary loss, fuel used, repair cost,

MOBILE APP

Figure 1. Steam system management can be carried out from the palm of your hand. This screen shows which traps have been tested along with pictures and trap conditions.



payback period, and CO₂ emissions.

The software's Team System, provides a facility summary of steam trap system performance rate and daily losses. It also alerts users with system notifications that allow for easy identification of problems and maintenance of equipment. It also shows annual steam loss — a 12-month view of steam and monetary loss (Figure

Steam System Monitoring Software

Look for steam trap monitoring technology that offers features such as these that may be beneficial to refineries:

- Cloud-based data that provides access to historical information for all steam traps as needed, by individual location or area, for multiple sites, with no need to load specific routes;
- Steam trap failure prediction based on historical data;
- Determine of the most appropriate steam trap for an application or unique conditions of a certain area;
- Inventory, categorization and tracking of the entire steam trap population;
- Surveying, tagging and identification of steam traps and in-house surveys and partial surveys of the traps, including photos of individual traps;
- Repair list generation;
- Active steam trap testing;
- Seasonal steam trap viewing and identification of traps to be shut off;
- CO₂ footprint monitoring.

DASHBOARD

Figure 2. The dashboard displays hot water information, steam loss data and alerts.



2). Sage is engineered to work seamlessly with all of Armstrong's real-time monitoring products (SteamEye, AIM, and The Brain), to ensure it has access to the most current steam system data.

REFINERY SEES INCREASED EFFICIENCIES

The refinery now has access to the right information at the right time and by the right people. The software improved the refinery's ability to find and repair steam leaks, including those not associated with steam traps, and, as a result, it has reduced its steam trap failure rate significantly. The refinery's required steam production also has been reduced substantially, and the steam system runs with increased efficiency and less waste. ■

ARMSTRONG INTERNATIONAL is a private, fifth-generation family-owned company that provides intelligent system solutions that improve utility performance, lower energy consumption and reduce environmental emissions.

ADDITIONAL RESOURCES

EHANDBOOKS

Check out our vast library of past eHandbooks that offer a wealth of information on a single topic, aimed at providing best practices, key trends, developments and successful applications to help make your facilities as efficient, safe, environmentally friendly and economically competitive as possible.

UPCOMING AND ON DEMAND WEBINARS

Tap into expert knowledge. Chemical Processing editors and industry experts delve into hot topics challenging the chemical processing industry today while providing insights and practical guidance. Each of these free webinars feature a live Q&A session and lasts 60 minutes.

WHITE PAPERS

Check out our library of white papers covering myriad topics and offering valuable insight into products and solutions important to chemical processing professionals. From automation to fluid handling, separations technologies and utilities, this white paper library has it all.

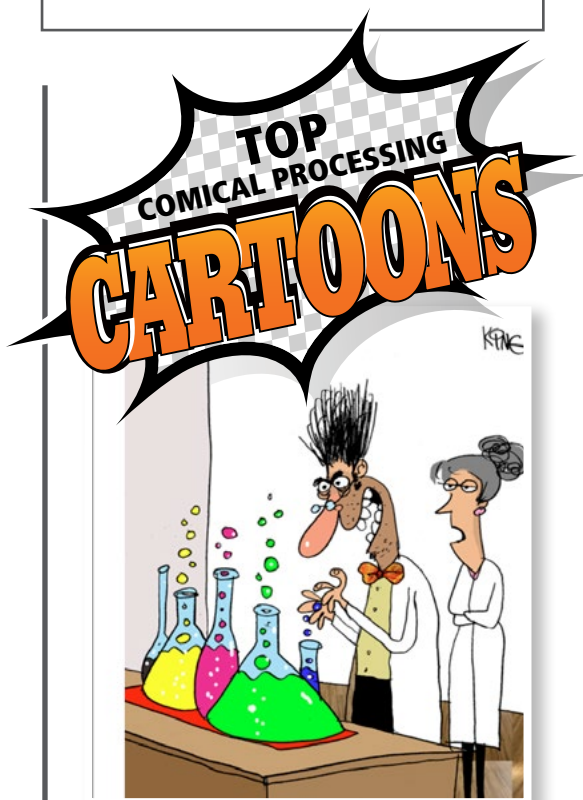
MINUTE CLINIC

Chemical Processing's Minute Clinic podcast series is designed to tackle one critical issue at a time — giving you hard-hitting information in just minutes.

ASK THE EXPERTS

Have a question on a technical issue that needs to be addressed? Visit our Ask the Experts forum. Covering topics from combustion to steam systems, our roster of leading subject matter experts, as well as other forum members, can help you tackle plant issues.

JOIN US ON
SOCIAL MEDIA!



Visit the lighter side, featuring drawings by award-winning cartoonist Jerry King. Click on an image and you will arrive at a page with the winning caption and all submissions for that particular cartoon.